

CLEANING, POLISHING AND MARKING OF STAINLESS STEELS

OPTICLEAN II

Inverter-technology installation for cleaning, polishing and marking of stainless steels. Use on TIG welds.

Your benefits:

- ◆ **AESTHETIC:** no stains on the steel after cleaning.
 - ◆ **ECOLOGICAL:** no need to wear gloves or protective masks with the neutral solution. Large outdoor areas are not required: no toxic vapor emissions, no need for water treatment plant.
 - ◆ **ECONOMIC:** no passivation after cleaning
 - ◆ **GAIN OF PRODUCTIVITY:** no need to dip the pump into the liquid and to interrupt the operation several times.
- Improvement of the quickness while increasing current. Efficiency increased with the carbon blush.



INVERTER TECHNOLOGY

OPTICLEAN II	To order
Machine OPTICLEAN II including :	W000382322
Torch	W000275260
Torch support	W000382323
Torch support extension	W000382325
Ground cable	W000375139
Torch power cable	W000375141
2,5 mm Allen key	W000382326
Brush	W000382329
Standard graphite insert 90°	W000382571
Narrow graphite insert 90°	W000382572
Standard TIG Bond pad 90° (by 10)	W000272348
Narrow Tig Bond pad 90° (by 10)	W000272351
Brill Bomar solution (100 ml)	W000272347
Brill Bomar solution (1,5 l)	W000387219
Neutral Bomar solution (100 ml)	W000272038
Neutral Bomar solution (1.5 l)	W000387218
Neutralizing solution Inox Fit 500 ml	W000274842

Optional	To order
Marking Kit INCLUDING :	W000271936
Black marking electrolyte 100 ml	W000272041
Erosion white marking electrolyte 100 ml	W000382573
Graphite marking insert 35 mm	W000272039
Marking felts insert	W000272040

Marking stencils dimensions	To order
25 x 15 mm	W000386781
54 x 16 mm	W000386780
54 x 32 mm	W000386779
85 x 27 mm	W000386785
85 x 54 mm	W000386786
128 x 42,5 mm	W000386787
128 x 85 mm	W000386782
170 x 54 mm	W000386783
170 x 108 mm	W000386784

Available sizes for the marking : 54 x 32 mm / 85 x 54 mm / 128 x 42,5 mm / 170 x 54 mm.
You just have to send your logo with the chosen dimensions.

You can simply order the marking kit and a cliché, providing us with your logo or any other writing: you can mark the product at least 500 times !

Technical data	OPTICLEAN II
Supply Voltage	230 V / 1Ph
Frequency	50/60 Hz
Capacity	450 W
Electrode Voltage	10/30 V AC/D
Isolation Class	IP 23
Noise level	< 10 dB [A]
Machine weight (empty)	7 kg
Machine dimensions	3 300 x 230 x 240 mm

See the video



1 - Cleaning

Place the cleaning solution onto the torch and choose whether you want to use the pad or the brush, which gives better access to angles that are difficult to reach. Rub the weld till its colour becomes clean.



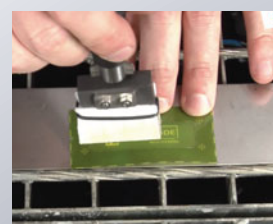
2 - Polishing

Place the polishing solution onto the torch and choose whether you want to use the pad or the brush. Rapidly, as you rub the weld, it will start to shine. Wipe your steel with a cloth rag in order to avoid stains.



3 - Marking

Take the appropriate suitcase containing both marking and eroding electrolytes. Rub the marking felt moistened with the electrolytic solution on the screen printing frame. Your logo is printed on the metal.



CAUTION:
before use, carefully read and understand the safety datasheet available on our websites