

INVERTEC[®] V205, V270 & V405

Spare Parts.....	1
INVERTEC V205 2V CE, V205 2V AUSTRALIA.....	1
Figure A.....	1
Figure A: Machine Assembly.....	2
Miscellaneous Items (not showed in figure A).....	2
INVERTEC V270 CE, V270 ASG CE, V270 2V CE, V270 2V ASG CE, V270 AUSTRALIA.....	3
Figure A.....	3
Figure B.....	3
Figures A & B: Machine Assemblies.....	4
Miscellaneous Items (not showed in figures A & B).....	4
INVERTEC V405 CE, V405 AUSTRALIA.....	5
Figure A.....	5
Figure A: Machine Assembly.....	6
Miscellaneous Items (not showed in figure A).....	6
Electrical Schematic.....	7
V205-S code 52041, 52042.....	7
V205-TP code 52045, 52046.....	7
V270-S code 52047, 52048.....	8
V270-S 2V code 52049.....	8
V270-T code 52050.....	9
V270-T ASG code 52086.....	10
V270-T 2V ASG code 52085.....	11
V270-TP code 52053, 52054.....	12
V270-TP 2V code 52055.....	12
V270-TP 2V ASG code 52056.....	13
V405-S code 52057, 52071.....	14
V405-TP code 52059, 52072.....	15



Spare Parts

SP52041/52042/52045/52046 Rev. 0
07/03

INVERTEC V205 2V CE, V205 2V AUSTRALIA

ASSEMBLY PAGE NAME		Machine Assembly	Miscellaneous items					
CODE NO.:	FIGURE NO.:	A	-					
52041	V205-S 2V CE	1	1					
52042	V205-S 2V AUS	1	1					
52045	V205-TP2V CE	2	1					
52046	V205-TP2V AUS	2	1					

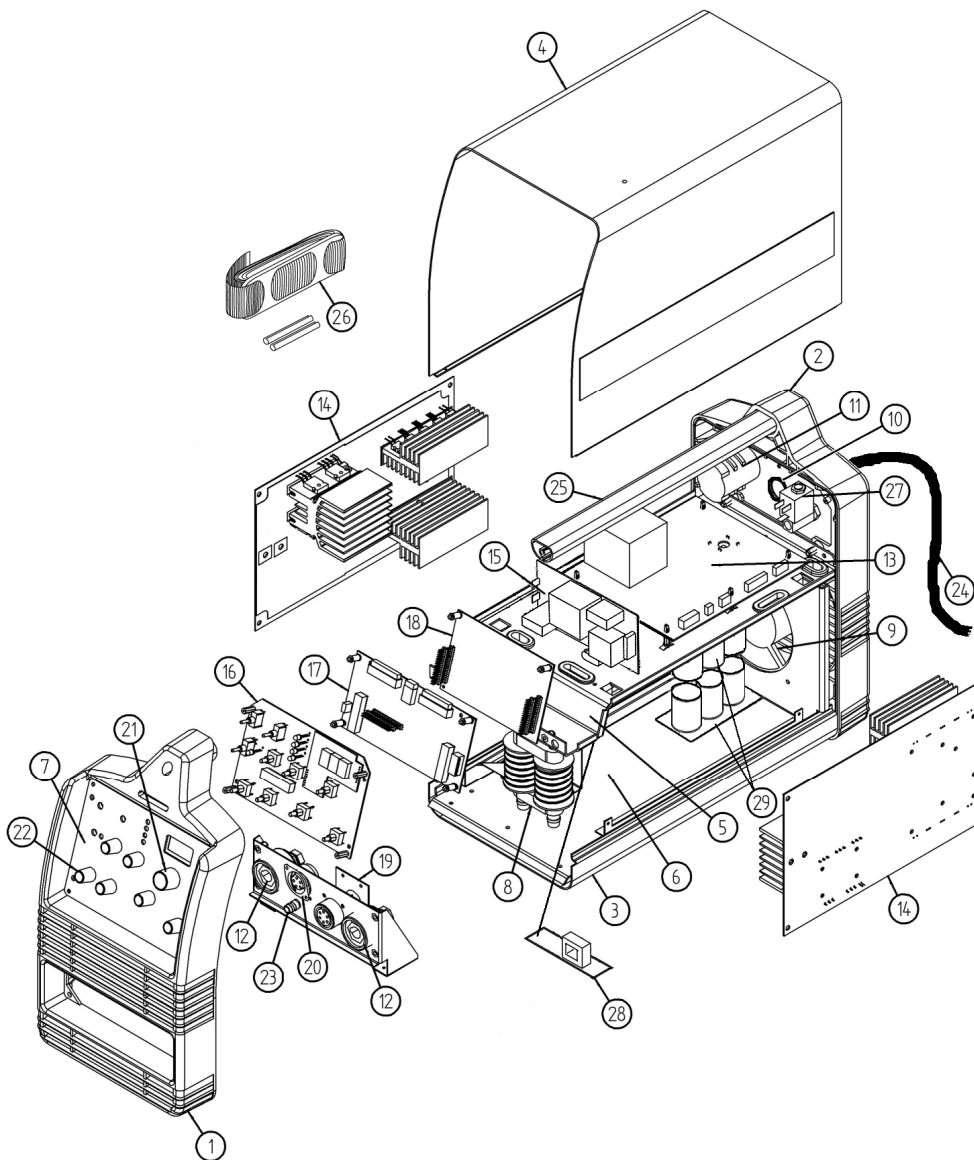


Figure A

Figure A: Machine Assembly

Item	Description	Part Number	QTY	1	2	3	4	5	6
1	FRONT PANEL	W95X0331R	1	X	X				
2	REAR PANEL	W95X0332R	1	X	X				
3	COMPLETE EXTERNAL BASE	W93X0327R	1	X	X				
4	WRAPAROUND + SIDE DECALS	W93X0326R W07X0821R	1	X	X				
5	INTERNAL UPPER SUPPORT	W93X0312R	1	X	X				
6	INTERNAL BASE	W93X0308R	1	X	X				
7	CONTROL PANEL S + FRONT DECAL	W93X0826R W07X0717R	1	X	•				
7	CONTROL PANEL TP + FRONT DECAL	W93X0827R W07X0718R	1	•	X				
8	HF TRANSFORMER	W59X0310R	1	•	X				
9	FAN	W66X0505R	1	X	X				
10	INPUT CABLE CLAMP	W8403222R	1	X	X				
11	INPUT SWITCH	W7511705R	1	X	X				
12	DINSE CONNECTOR	W7690350R	2	X	X				
13	INPUT P.C. BOARD	W05X0564R	1	X	X				
14	INVERTER P.C. BOARD	W05X0430R	2	X	X				
15	HF P.C. BOARD	W05X0285R	1	•	X				
16	DISPLAY P.C. BOARD S + SWITCH COVER CAP	W05X0713R W7500007R	1 3	X	•				
16	DISPLAY P.C. BOARD TP + SWITCH COVER CAP	W05X0714R W7500007R	1 2	•	X				
17	CONTROL INTERFACE P.C. BOARD	W05X0568R	1	X	X				
18	CONTROL P.C. BOARD	W05X0233R	1	X	X				
19	REMOTE P.C. BOARD WITH REMOTE CONNECTOR	W05X0322R	1	X	X				
20	TRIGGER CONNECTOR	W6100315R	1	•	X				
21	KNOB (LARGE)	W8700030R	1	X	X				
22	KNOB (SMALL)	W8700016R	2	X	•				
22	KNOB (SMALL)	W8700016R	6	•	X				
23	FEMALE QUICK CONNECT GAS CONNECTOR	W8800076R	1	•	X				
24	INPUT CORD	W78X0677R	1	X	X				
25	HANDLE	W92X0228-2R	1	X	X				
26	CARRYING STRAP	W92X0264R	1	X	X				
27	GAS SOLENOID	W8500004R	1	•	X				
28	HALL SENSOR P.C. BOARD	W05X0380R	1	X	X				
29	STABILIZER P.C. BOARD	W05X0569R	2	X	X				

Miscellaneous Items (not showed in figure A)

Item	Description	Part Number	QTY	1	2	3	4	5	6
	AUXILIARY FUSE ON INPUT BOARD	W7301000R	2	X					
	OUTPUT FILTER CAPACITORS	W66X0484R	1	X					

INVERTEC V270 CE, V270 ASG CE, V270 2V CE, V270 2V ASG CE, V270 AUSTRALIA

ASSEMBLY PAGE NAME		Machine Assembly V270	Machine Assembly V270 2V	Miscellaneous items				
CODE NO.:	FIGURE NO.:	A	B	-				
52047	V270-S CE	1	-	1				
52048	V270-S AUS	1	-	1				
52049	V270-S 2V CE	-	2	1				
52050	V270-T CE	3	-	1				
52086	V270-T ASG CE	-	8	1				
52085	V270-T 2V ASG CE	-	7	1				
52053	V270-TP CE	4	-	1				
52054	V270-TP AUS	4	-	1				
52055	V270-TP 2V CE	-	5	1				
52056	V270-TP 2V ASG CE	-	6	1				

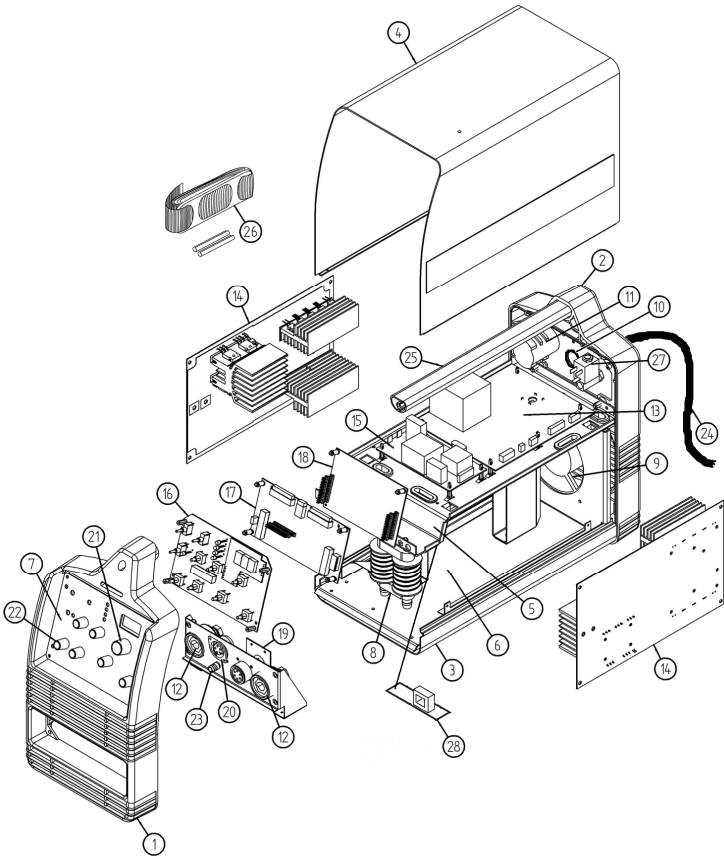


Figure A

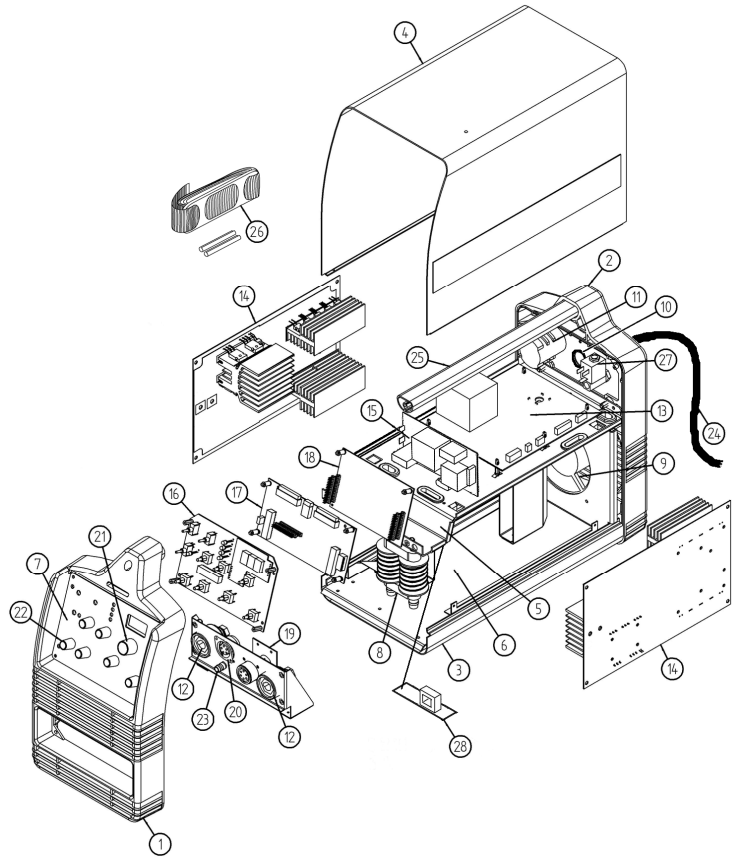


Figure B

Figures A & B: Machine Assemblies

Item	Description	Part Number	QTY	1	2	3	4	5	6	7	8
1	FRONT PANEL	W95X0331R	1	X	X	X	X	X	X	X	X
2	REAR PANEL	W95X0332R	1	X	X	X	X	X	X	X	X
3	COMPLETE EXTERNAL BASE	W93X0327R	1	X	X	X	X	X	X	X	X
4	WRAPAROUND + SIDE DECALS	W93X0326R W07X0822R	1	X	X	X	X	X	X	X	X
5	INTERNAL UPPER SUPPORT	W93X0312R	1	X	X	X	X	X	X	X	X
6	INTERNAL BASE	W93X0308R	1	X	X	X	X	X	X	X	X
7	CONTROL PANEL S + FRONT DECAL	W93X0826R W07X0719R	1	X	X
7	CONTROL PANEL T + FRONT DECAL	W93X0827R W07X0831R	1	.	.	X	.	.	.	X	X
7	CONTROL PANEL TP + FRONT DECAL	W93X0827R W07X0720R	1	.	.	.	X	X	X	.	.
8	HF TRANSFORMER	W59X0310R	1	.	.	X	X	X	.	.	.
8	HF TRANSFORMER ASG	W59X0721R	1	X	X	X
9	FAN	W7200003R	1	X	X	X	X	X	X	X	X
10	INPUT CABLE CLAMP	W8400006R	1	X	.	X	X	.	.	.	X
10	INPUT CABLE CLAMP	W8403222R	1	.	X	.	.	X	X	X	.
11	INPUT SWITCH	W7511703R	1	X	.	X	X	.	.	.	X
11	INPUT SWITCH	W7511704R	1	.	X	.	.	X	X	X	.
12	DINSE CONNECTOR	W7690350R	2	X	X	X	X	X	X	X	X
13	INPUT P.C. BOARD	W05X0290R	1	X	.	X	X	.	.	.	X
13	INPUT P.C. BOARD	W05X0411R	1	.	X	.	.	X	X	X	.
14	INVERTER P.C. BOARD	W05X0430R	2	X	X	X	X	X	.	.	.
14	INVERTER P.C. BOARD ASG	W05X0430R1	2	X	X	X
15	HF P.C. BOARD	W05X0285R	1	.	.	X	X	X	.	.	.
15	HF P.C. BOARD ASG	W05X0724R	1	X	X	X
16	DISPLAY P.C. BOARD S + SWITCH COVER CAP	W05X0713R W7500007R	1 3	X	X
16	DISPLAY P.C. BOARD T + SWITCH COVER CAP	W05X0746R W7500007R	1 2	.	.	X	.	.	.	X	X
16	DISPLAY P.C. BOARD TP + SWITCH COVER CAP	W05X0714R W7500007R	1 2	.	.	.	X	X	X	.	.
17	CONTROL INTERFACE P.C. BOARD	W05X0568R	1	X	X	X	X	X	.	.	.
17	CONTROL INTERFACE P.C. BOARD ASG	W05X0568-1R	1	X	X	X
18	CONTROL P.C. BOARD	W05X0233R	1	X	X	X	X	X	.	.	.
18	CONTROL P.C. BOARD ASG	W05X0233-1R	1	X	X	X
19	REMOTE P.C. BOARD REMOTE CONNECTOR	W05X0322R	1	X	X	X	X	X	X	X	X
20	TRIGGER CONNECTOR	W6100315R	1	.	.	X	X	X	X	X	X
21	KNOB (LARGE)	W8700030R	1	X	X	X	X	X	X	X	X
22	KNOB (SMALL)	W8700016R	2	X	X	X	.	.	.	X	X
22	KNOB (SMALL)	W8700016R	6	.	.	.	X	X	X	.	.
23	FEMALE QUICK CONNECT GAS CONNECTOR	W8800076R	1	.	.	X	X	X	X	X	X
24	INPUT CORD	W78X0337R	1	X	.	X	X	.	.	.	X
24	INPUT CORD	W78X0436R	1	.	X	.	.	X	X	X	.
25	HANDLE	W92X0228-2R	1	X	X	X	X	X	X	X	X
26	CARRYING STRAP	W92X0264R	1	X	X	X	X	X	X	X	X
27	GAS SOLENOID	W8500004R	1	.	.	X	X	X	X	X	X
28	HALL SENSOR P.C. BOARD	W05X0380R	1	X	X	X	X	X	X	X	X

Miscellaneous Items (not showed in figures A & B)

Item	Description	Part Number	QTY	1	2	3	4	5	6	7	8
	AUXILIARY FUSE ON INPUT BOARD	W7301000R	2	X							
	OUTPUT FILTER CAPACITORS	W66X0484R	1	X							

INVERTEC V405 CE, V405 AUSTRALIA

ASSEMBLY PAGE NAME		Machine Assembly	Miscellaneous items				
CODE NO.:	FIGURE NO.:	A	-				
52057	V405-S CE	1	1				
52071	V405-S AUS	1	1				
52059	V405-TP CE	2	1				
52072	V405-TP AUS	2	1				

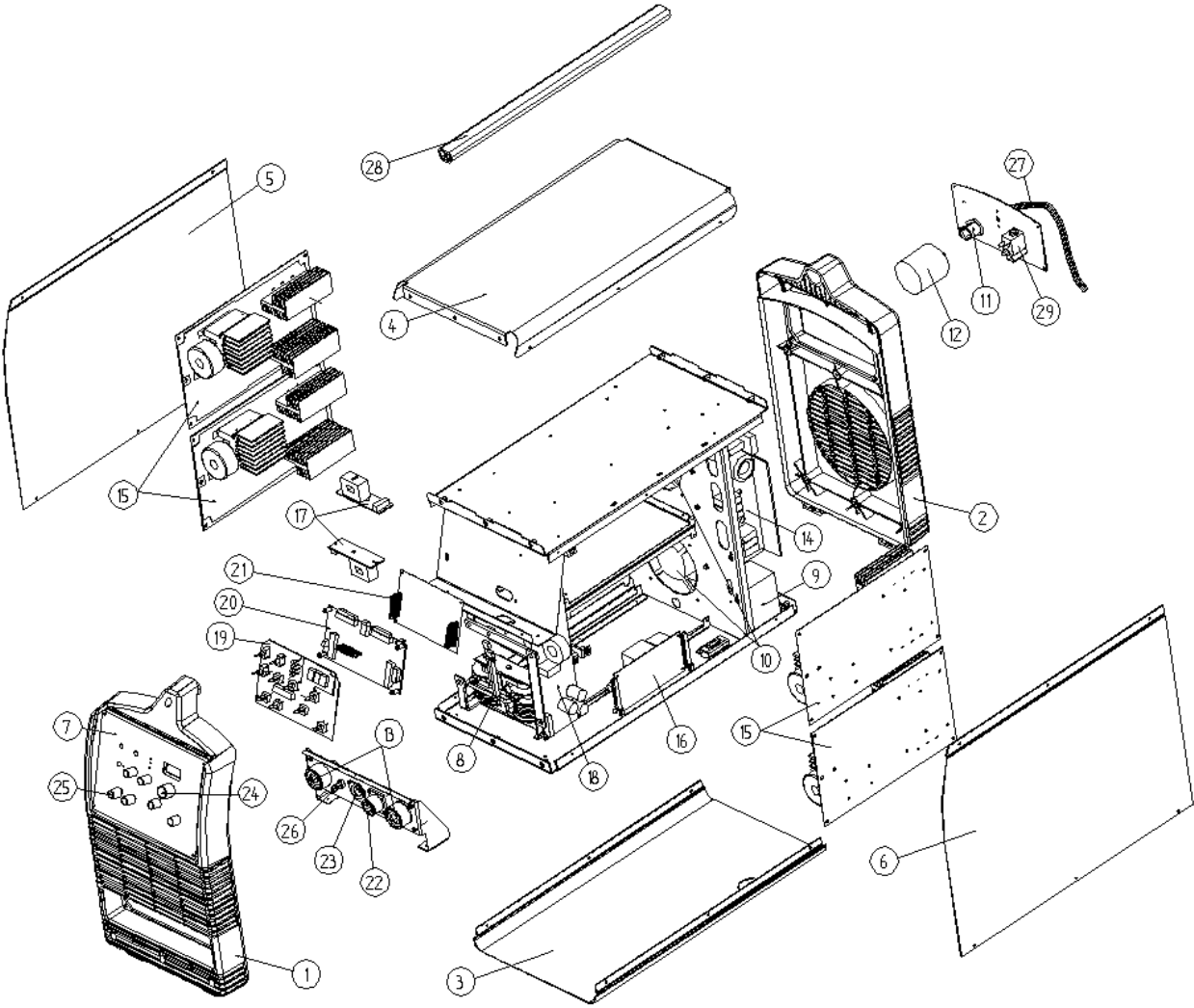


Figure A

Figure A: Machine Assembly

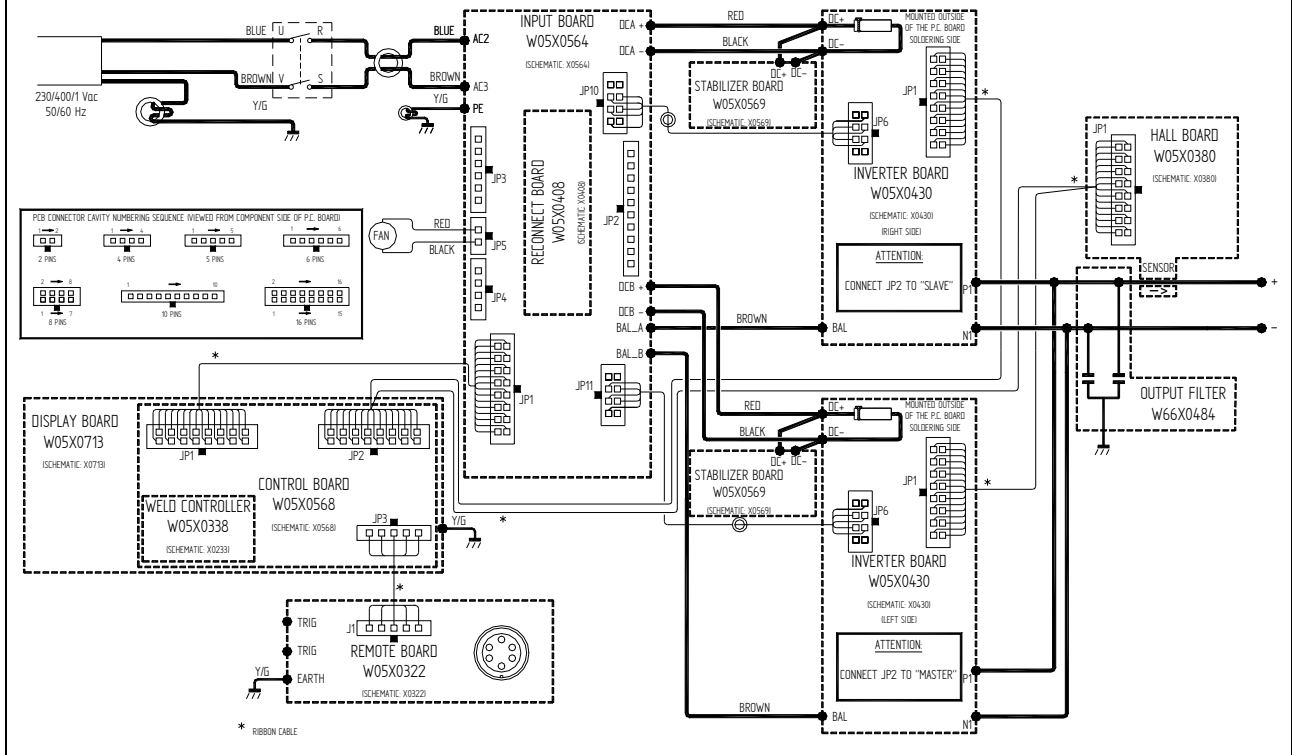
Item	Description	Part Number	QTY	1	2	3	4	5	6
1	FRONT PANEL	W95X0355R	1	X	X				
2	REAR PANEL	W95X0356R	1	X	X				
3	COMPLETE EXTERNAL BASE	W93X0387R	1	X	X				
4	WRAPAROUND TOP	W93X0386R	1	X	X				
5	WRAPAROUND LEFT + SIDE DECAL	W93X0388R W07X0823-1R	1	X	X				
6	WRAPAROUND RIGHT + SIDE DECAL	W93X0389R W07X0823-2R	1	X	X				
7	CONTROL PANEL S + FRONT DECAL	W93X0828R W07X0832R	1	X	•				
7	CONTROL PANEL TP + FRONT DECAL	W93X0829R W07X0834R	1	•	X				
8	HF TRANSFORMER	W59X0492R	1	•	X				
9	AUXILIARY TRANSFORMER	W59X0417R	1	X	X				
10	FAN	W66X0477R	2	X	X				
11	INPUT CABLE CLAMP	W8403222R	1	X	X				
12	INPUT SWITCH	W7511706R	1	X	X				
13	DINSE CONNECTOR	W7690351R	2	X	X				
14	INPUT P.C. BOARD	W05X0486R	1	X	X				
15	INVERTER P.C. BOARD	W05X0430R	4	X	X				
16	HF P.C. BOARD	W05X0285R	1	•	X				
17	HALL SENSOR P.C. BOARD	W05X0380R	2	X	X				
18	SMPS P.C. BOARD	W05X0487R	1	X	X				
19	DISPLAY P.C. BOARD S + SWITCH COVER CAP	W05X0713R W7500007R	1 3	X	•				
19	DISPLAY P.C. BOARD TP + SWITCH COVER CAP	W05X0714R W7500007R	1 2	•	X				
20	CONTROL INTERFACE P.C. BOARD	W05X0568R	1	X	X				
21	CONTROL P.C. BOARD	W05X0233R	1	X	X				
22	REMOTE P.C. BOARD WITH REMOTE CONNECTOR	W05X0322R	1	X	X				
23	TRIGGER CONNECTOR	W6100315R	1	•	X				
24	KNOB (LARGE)	W8700030R	1	X	X				
25	KNOB (SMALL)	W8700016R	2	X	•				
25	KNOB (SMALL)	W8700016R	6	•	X				
26	FEMALE QUICK CONNECT GAS CONNECTOR	W8800076R	1	•	X				
27	INPUT CORD	W78X0853R	1	X	X				
28	HANDLE	W92X0375-1R	1	X	X				
29	GAS SOLENOID	W8500004R	1	•	X				

Miscellaneous Items (not showed in figure A)

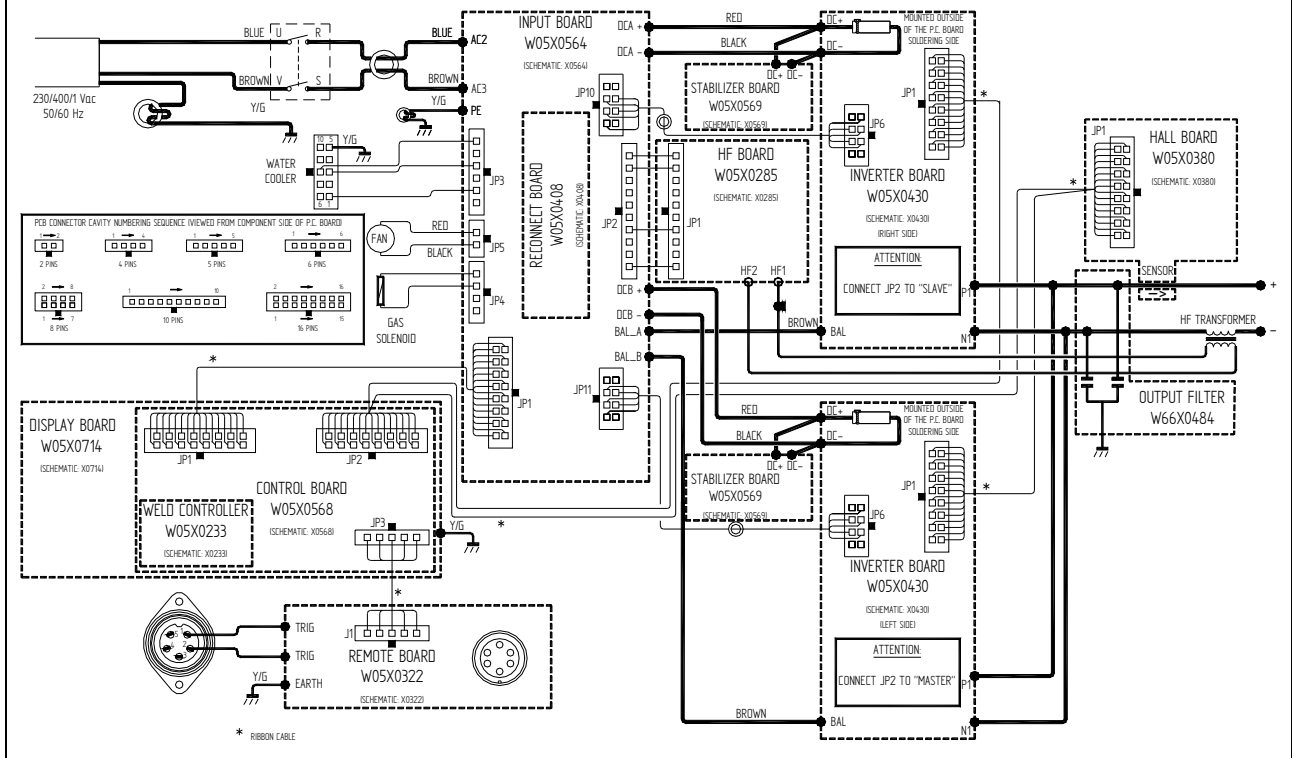
Item	Description	Part Number	QTY	1	2	3	4	5	6
	AUXILIARY FUSE ON SMPS BOARD	W7301000R	1	X					
	OUTPUT FILTER CAPACITORS	W66X0484R	1	X					

Electrical Schematic

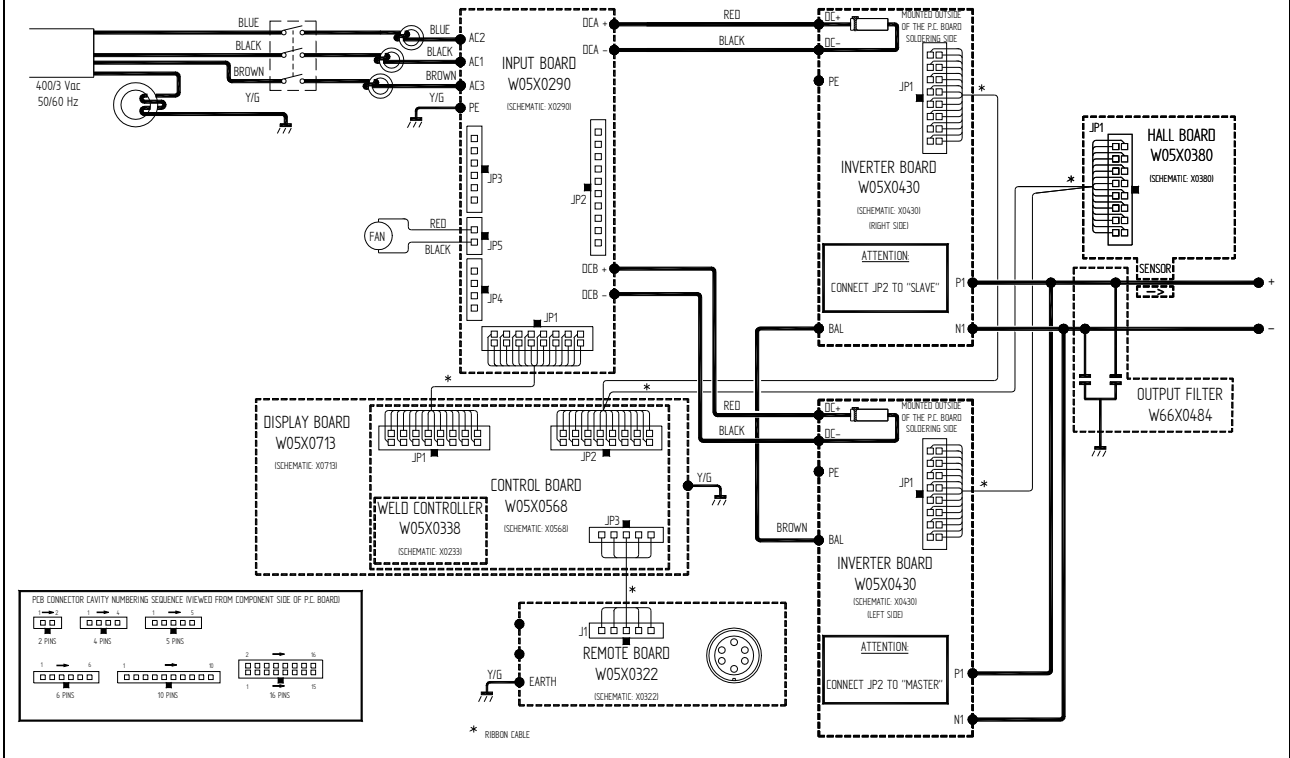
V205-S code 52041, 52042



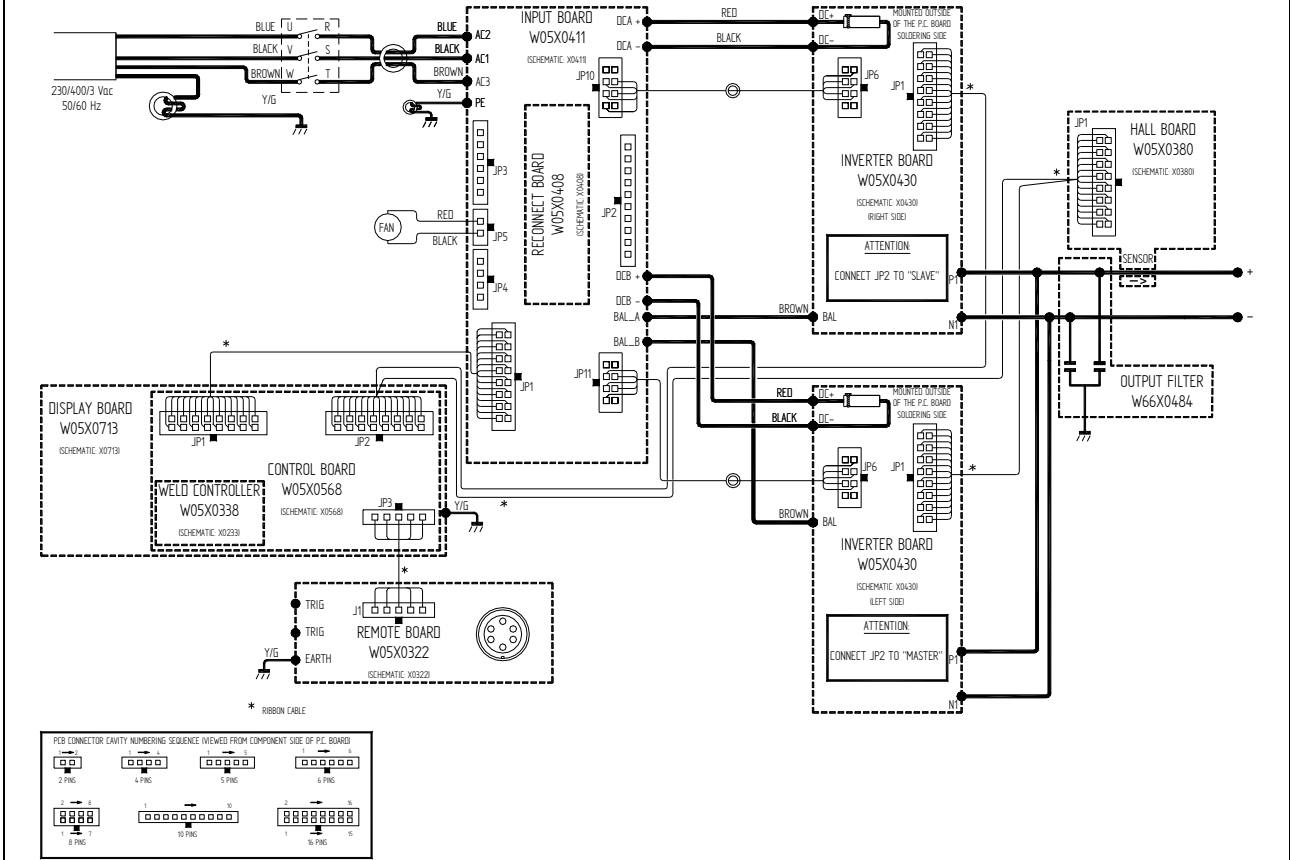
V205-TP code 52045, 52046



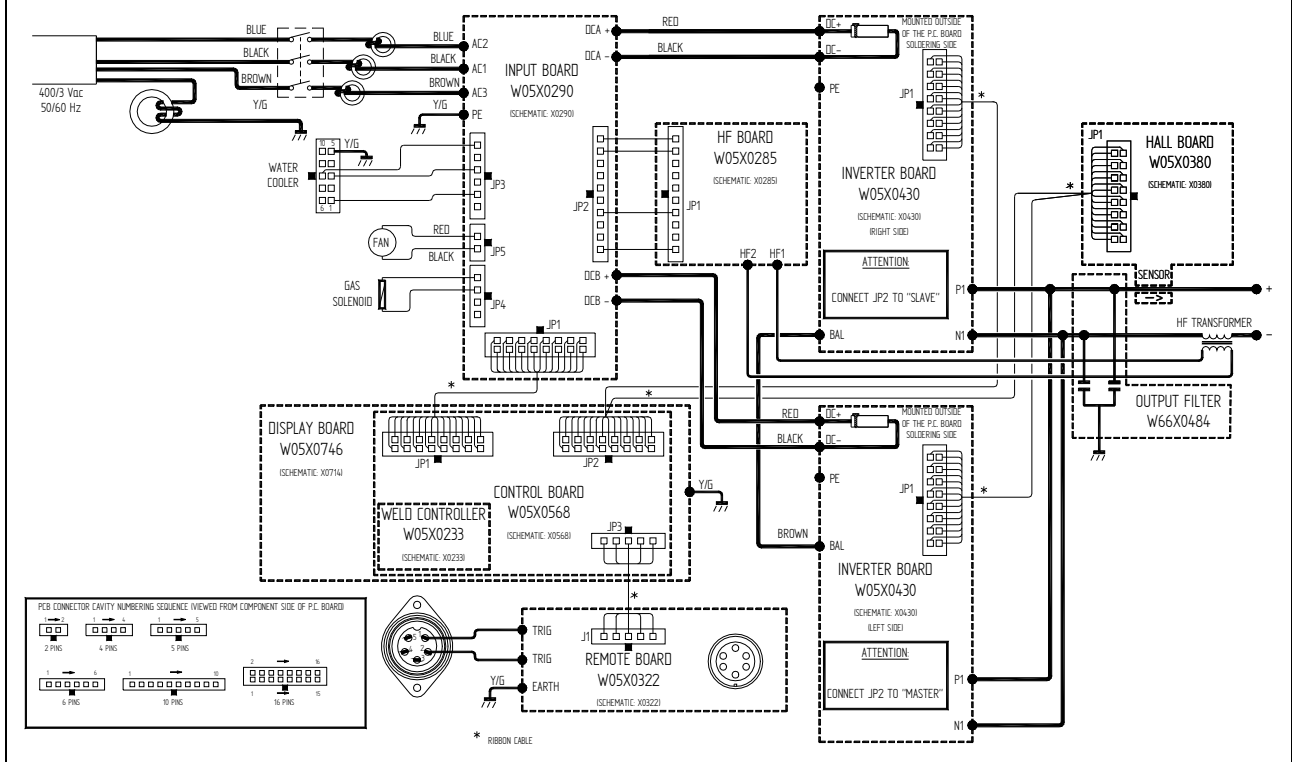
V270-S code 52047, 52048



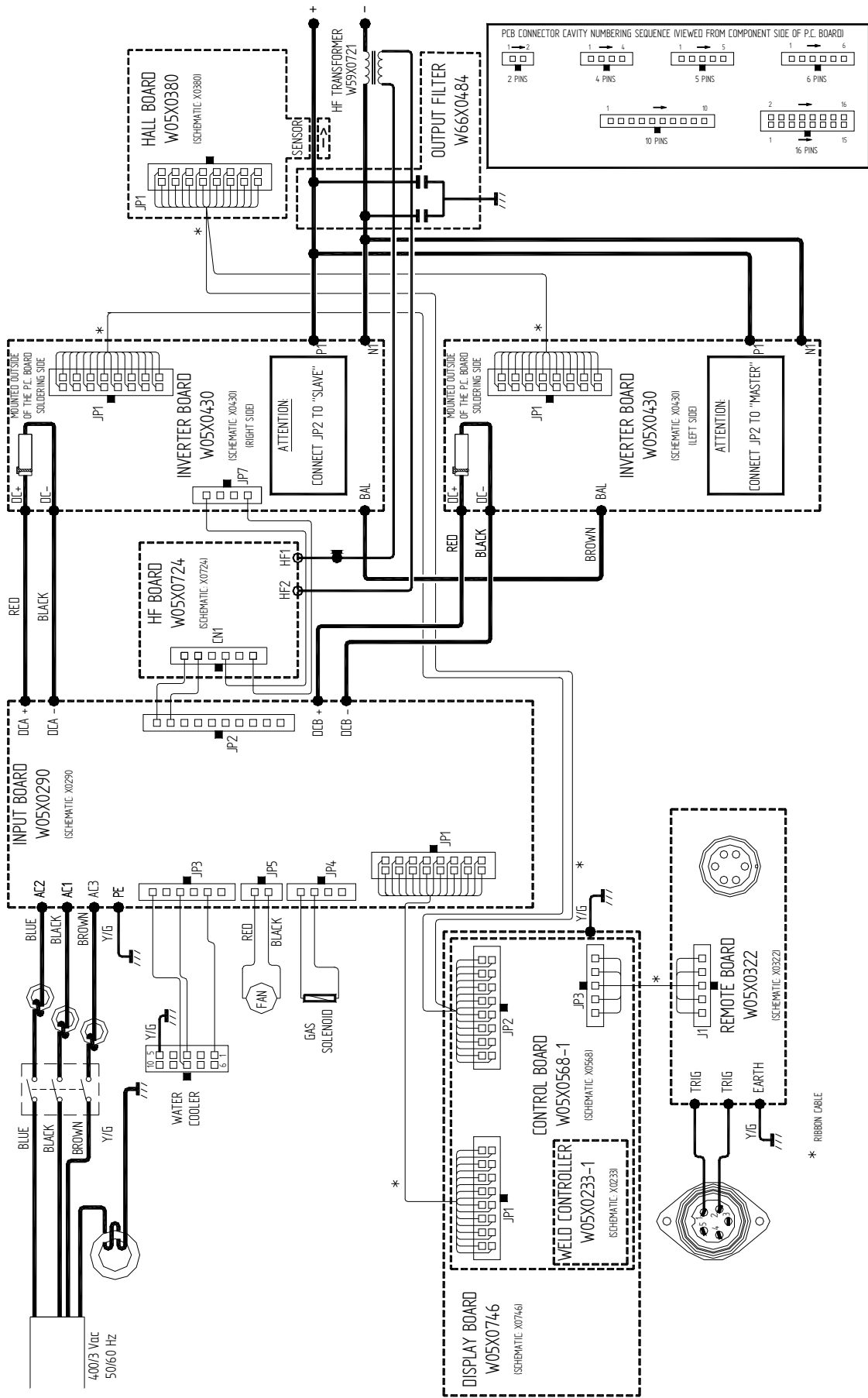
V270-S 2V code 52049



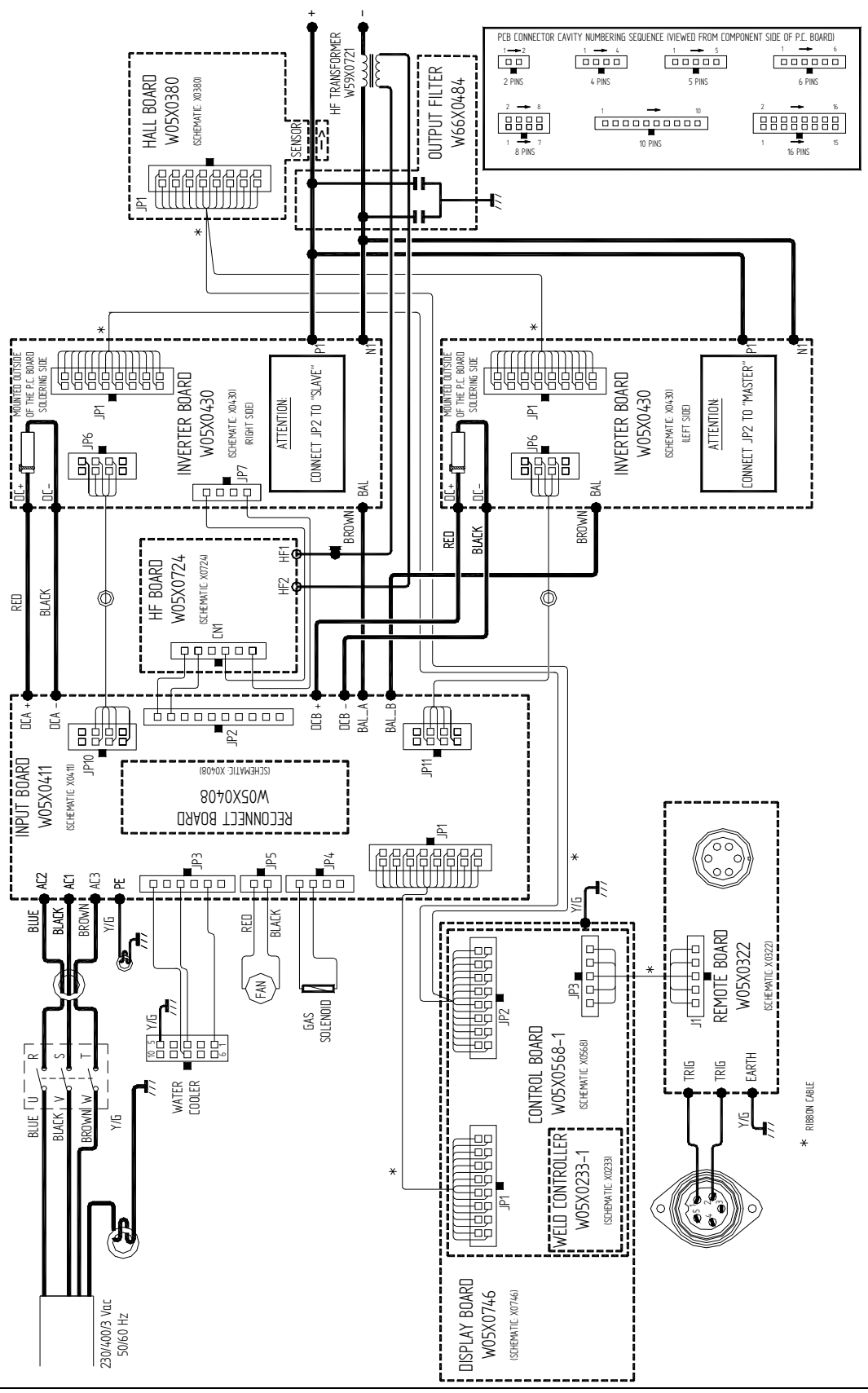
V270-T code 52050



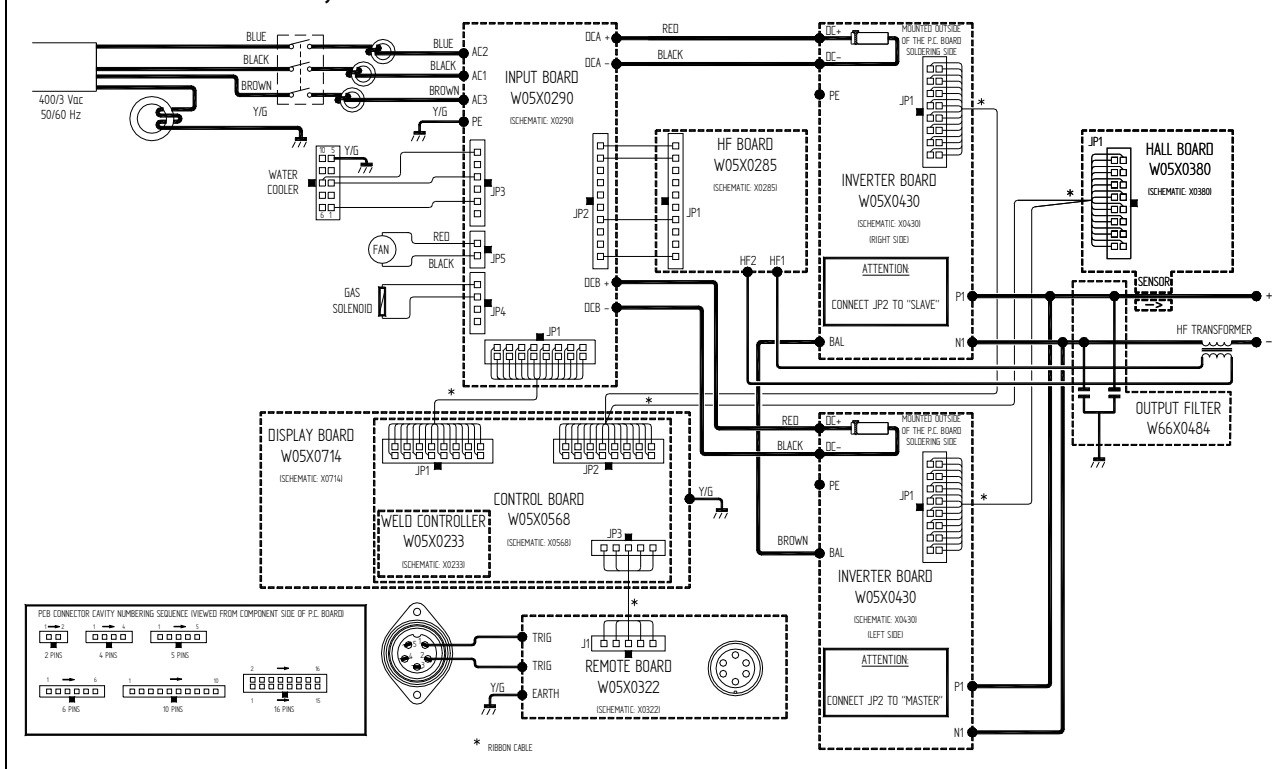
V270-T ASG code 52086



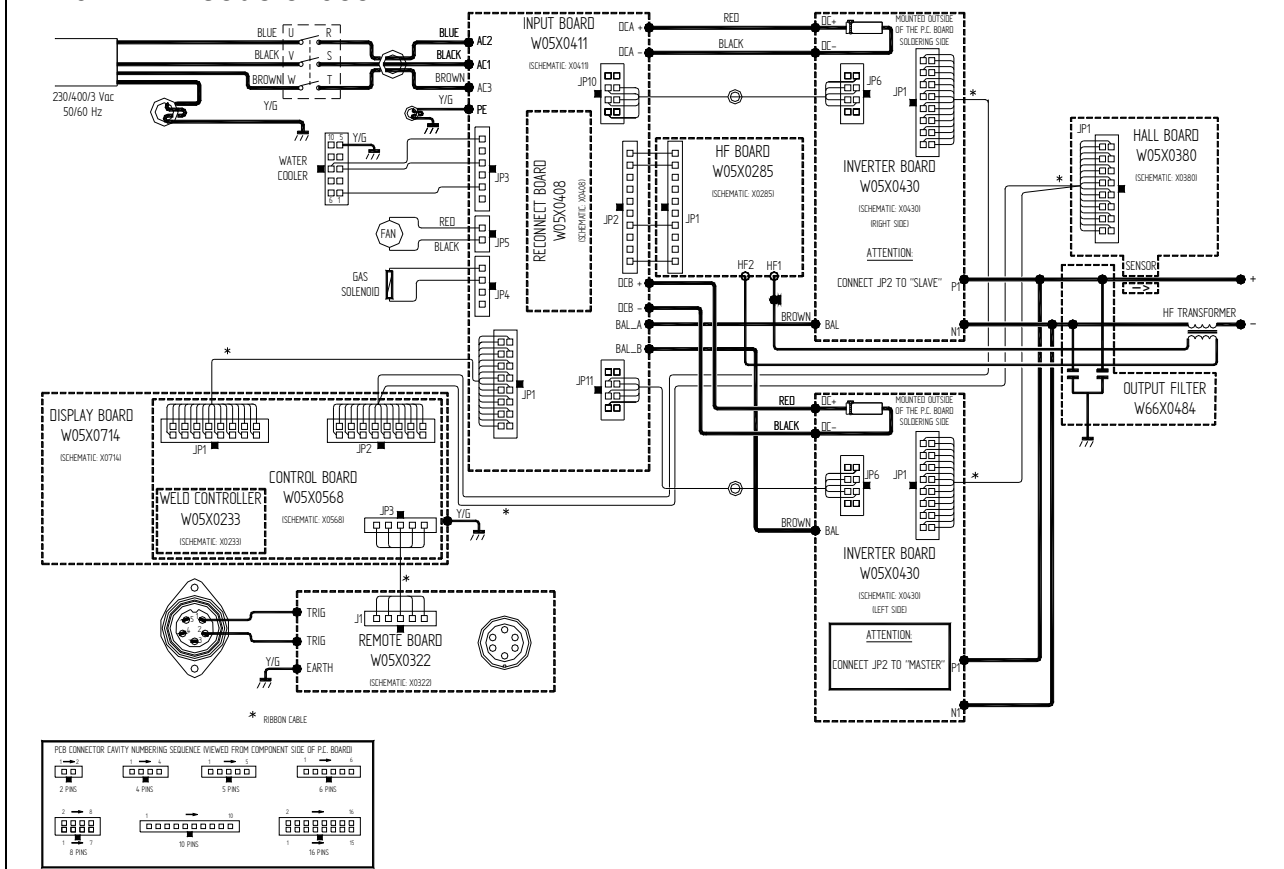
V270-T 2V ASG code 52085



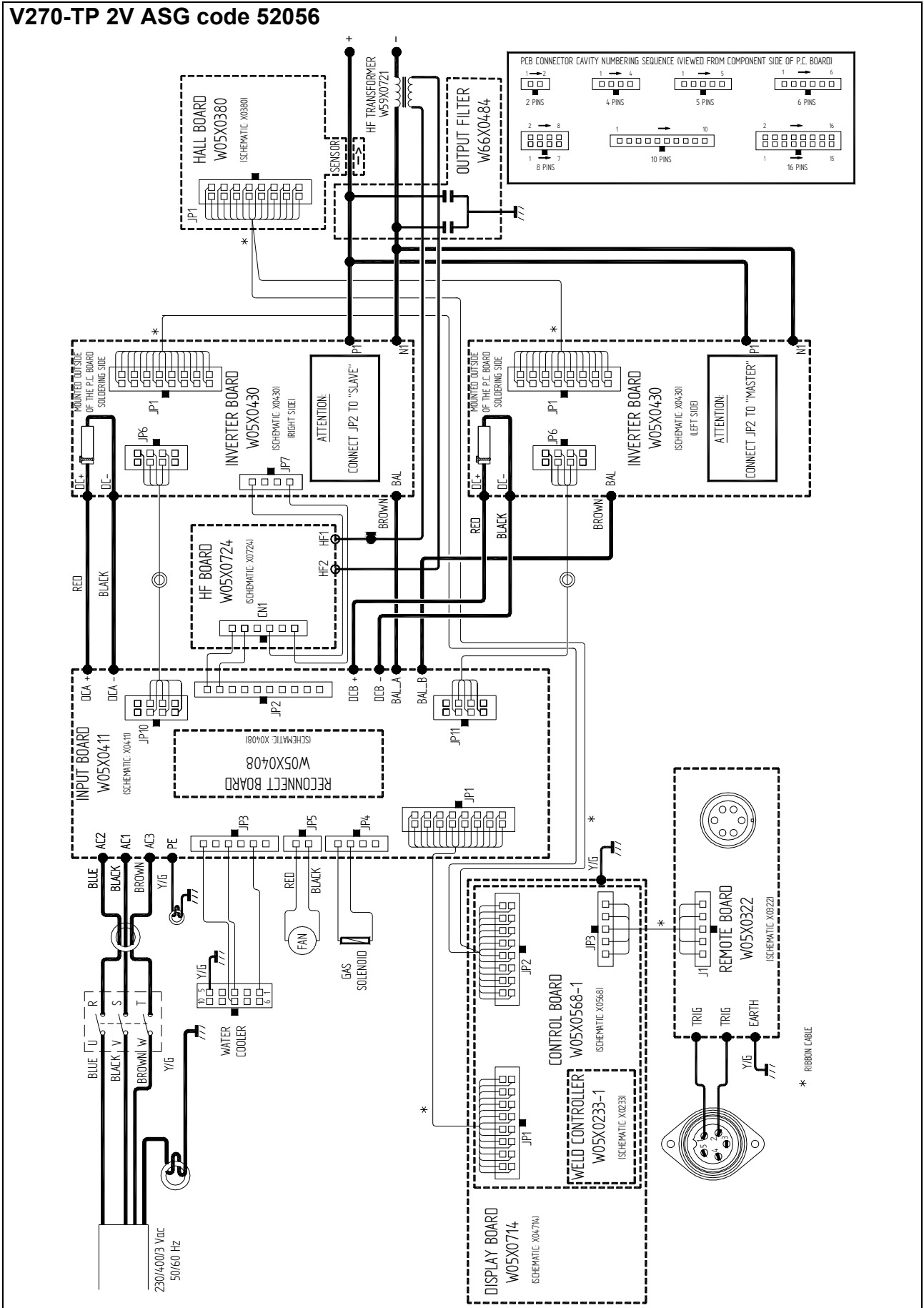
V270-TP code 52053, 52054



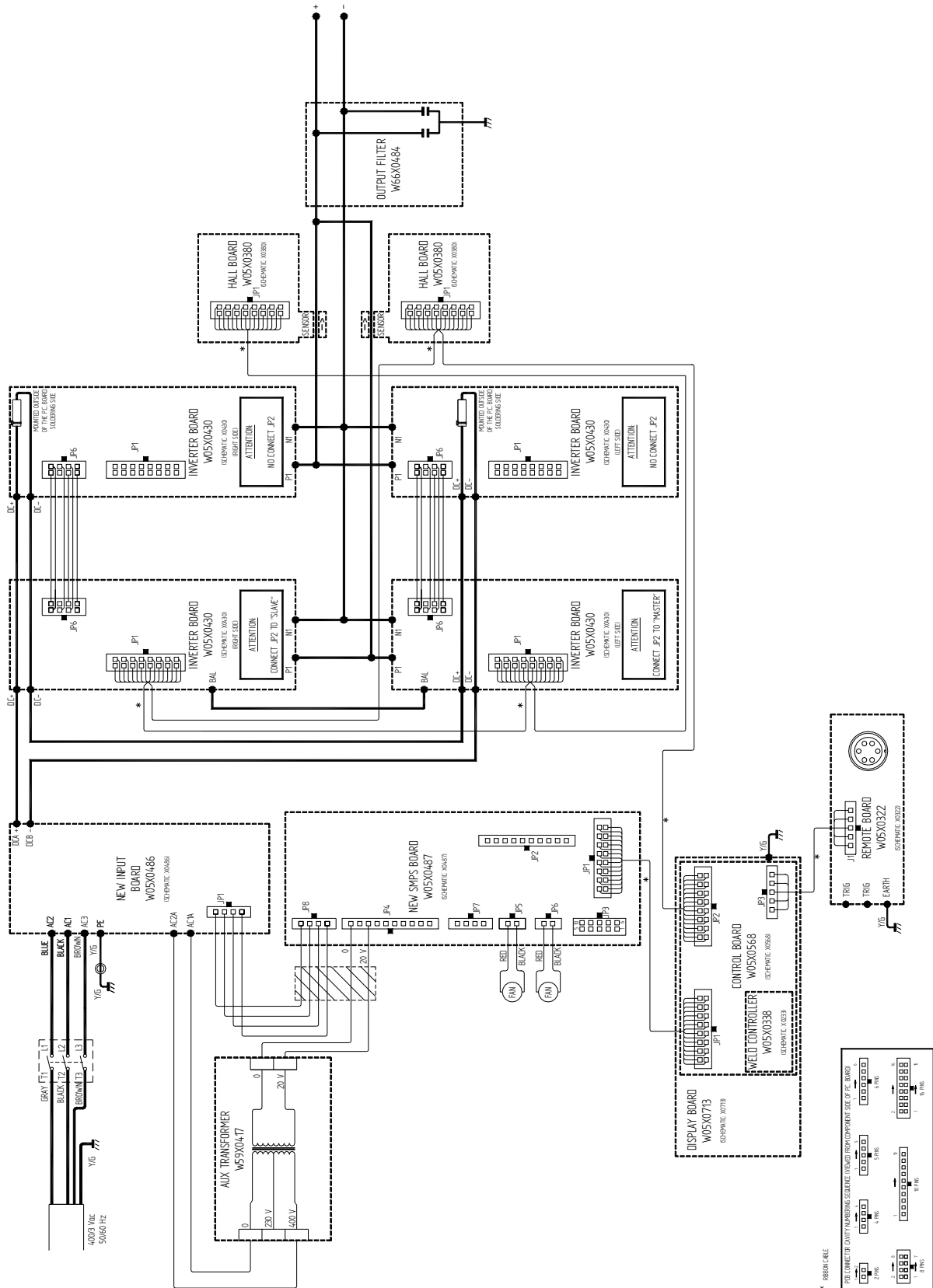
V270-TP 2V code 52055



V270-TP 2V ASG code 52056



V405-S code 52057, 52071



V405-TP code 52059, 52072

