

UNIVERSAL BUG-O-MATIC

Flexible, Compact Drive and Oscillator
Combination for Welding in All Positions



Bug-O Systems

Automated Cutting and Welding Systems

1-412-331-1776
www.bugo.com

500 AMP U.S.A.



UNIVERSAL BUG-O-MATIC



The **Universal Bug-O-Matic** (BUG-5700, BUG-5702 and BUG-5704) is a compact unit which combines a powerful drive and precision oscillator all in one housing. The unit is lightweight and can easily be handled by one operator. The machine works in all positions and can be used for vertical and overhead welds. By simply changing the carriage, the unit can work on rigid rail, semi-flex rail, hi-flex rail or complete ring rails. The opening mechanism of the carriage allows the unit to be released or installed anywhere on the rail.

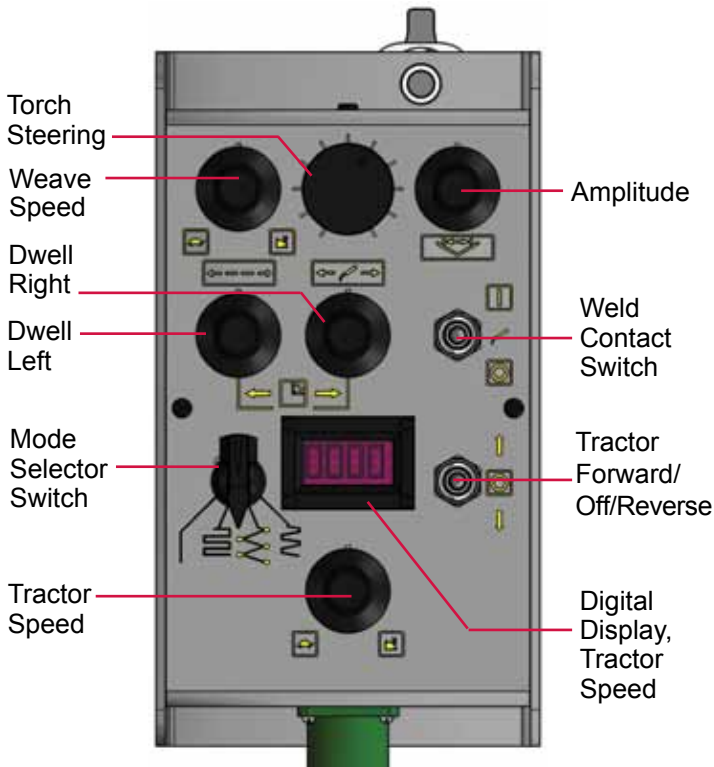
While welding, adjustments can be made to the travel speed, amplitude and oscillation speed as well as dwell left and dwell right. While the machine is welding, the torch can be guided by a separate steering knob. Closed loop feedback and dynamic braking allow the Bug-O-Matic to make precise starts, stops and travel at a constant speed.

The **Universal Bug-O-Matic with Auto Height Control** (BUG-6550, BUG-6552 and BUG-6554) has the same functions as the Universal Bug-O-Matic but in addition features amperage sensing automatic torch height adjuster which maintains constant torch to work distance. The Height Control features a motorized slide which provides a total of 2" (51 mm) of vertical travel.

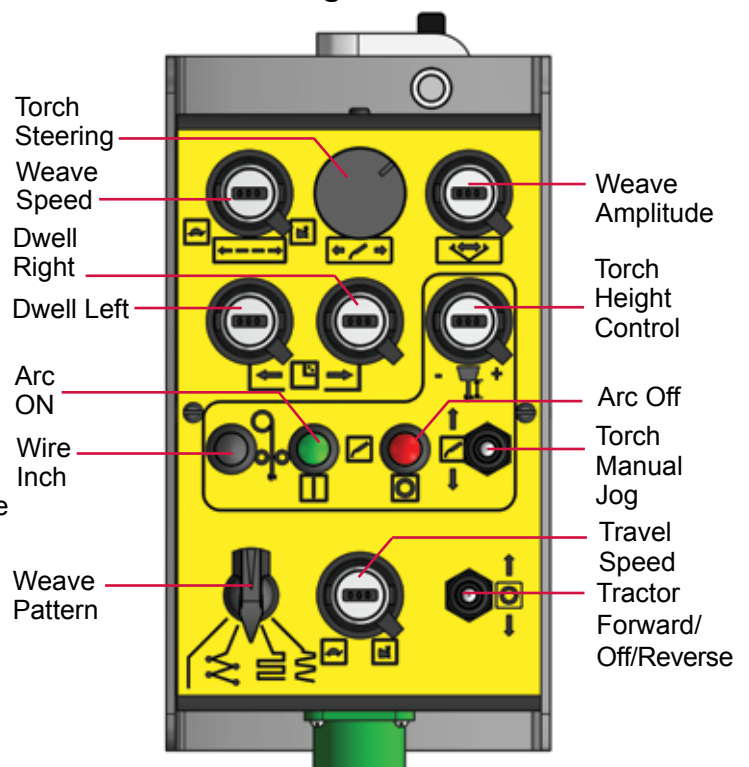
Pendant Control

The Universal Bug-O-Matic features a remote control pendant which allows the operator to run the machine from up to 10 feet (3 m) away. The pendant can be clamped to the machine handle for easy storage or transport.

Standard Pendant



Automatic Height Control Pendant



Universal Bugomatic Options

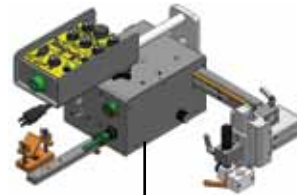
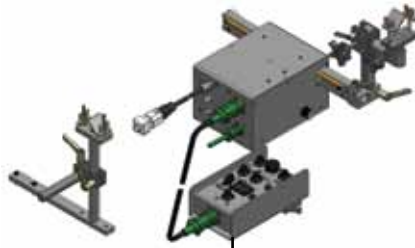
1 Control Modules

Standard Universal Bugomatic

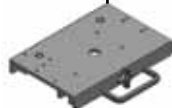
BUG-5700 120 VAC
BUG-5702 240 VAC
BUG-5704 42 VAC

Universal Bugomatic with Automatic Height Control

BUG-6550 120 VAC
BUG-6552 240 VAC
BUG-6554 42 VAC



2 Carriages



MPD-1065
12" (305 mm)
Releasable
Carriage



BUG-5910
Tube Carriage



FMD-1105
Hi-Flex
Carriage

3 Rails



ARR-1080
Aluminum
Rigid Rail 8' (2.37 m)

ARR-1085
Aluminum
Rigid Rail 4' (1.18 m)

AFR-3000
Semi-Flex Rail
8' (2.37m) - Flex
to minimum
radius 15' (5 m)



BRR-1180
Bent Rigid
Rail



BRR-3250-
Bent Ring
Rail

Minimum
Workpiece
Diameter
9" (230 mm)



FMD-1050
Hi-Flex Rail 57.72"
(1.47 mm) - Flex to
minimum radius 30"
(760 mm)

4 Attachments



ARM-
Magnets



ARV-
Vacuum Cups



ARM-2380
Support Bar
w/Screw Feet



ARM-2480
Support Bar
w/Magnets



FMD-
Magnets



FMD-
Vacuum Cups

For more information on vacuum cups, magnets and rails, please see the corresponding rail page in the "Rails and Attachments" brochure in order to match the correct attachments with your rails.



UNIVERSAL BUG-O-MATIC

The **Universal Bug-O-Matic** is operator friendly and produces precise accurate welds. The remote pendant allows the operator to produce repeatable welds with pre-set parameters which increases production, improves quality and workers environment.

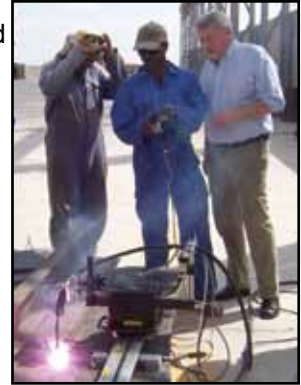
Technical Data:

Universal Bug-O-Matic

Power Requirements:	BUG-5700 120 VAC/50-60/1 BUG-5702 240 VAC/50-60/1 BUG-5704 42 VAC/50-60/1
Linear Speed:	3-70 ipm (75-1750 mm/m)
Weave Speed:	4-100 ipm (100-2500 mm/m)
Dwell Time:	0-3 seconds, left and right
Weave Width:	0.1-2" (2.5-50 mm)
Steering:	2" (50 mm) left and right of center 4" (100 mm) total
Load Capacity:	30 lbs. (14 kg)
Net Weight:	28 lbs. (13 kg)
Shipping Weight:	33 lbs. (15 kg)

Universal Bug-O-Matic With Auto Height Control

Power Requirements:	BUG-6550 120 VAC/50-60/1 BUG-6552 240 VAC/50-60/1 BUG-6554 42 VAC/50-60/1
Linear Speed:	3-70 ipm (75-1750 mm/m)
Weave Speed:	4-100 ipm (100-2500 mm/m)
Dwell Time:	0-3 seconds, left and right
Weave Width:	0.1-2" (2.5-50 mm)
Steering:	2" (50 mm) left and right of center 4" (100 mm) total
Load Capacity:	30 lbs. (14 kg)
Net Weight:	36 lbs. (16 kg)
Shipping Weight:	41 lbs. (19 kg)



Dimensions:

